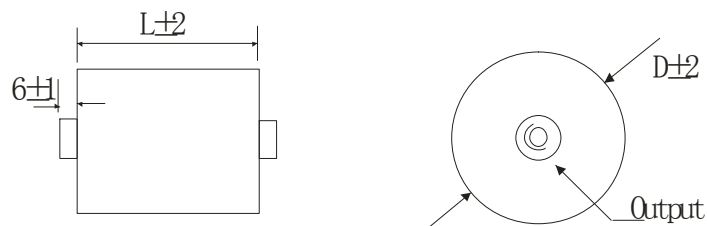


GENERAL TECHNICAL CHARACTERISTICS	
Reference standards :	IEC 61071-60068
Climatic category:	40/85/56
Dielectric :	Polypropylene film
Construction :	Dry construction, filled by solid resin
Features:	Low ESR, Low Ls, high stability. Self healing
ELECTRICAL CHARACTERISTICS	
Working temperature :	-40 to + 85°C (max hotspot ≤ 85°C)
Storage temperature :	-40 to + 85°C
Capacitance :	15~300μF
Rated Voltage	400 to 3000 Vdc
Tolerance :	± 5%(J) ± 10%(K)
Life expectancy :	100,000 hours at Un and 70°C
TEST METHODS AND PERFORMANCES	
Insulation resistance :	≥5,000s after 1 minute of electrification at 100Vdc (25±5°C)
Test voltage between terminals	1.5Un applied for 10s at 25±5°C
Test voltage between terminals and case :	3.0 KV 50Hz for 60 sec

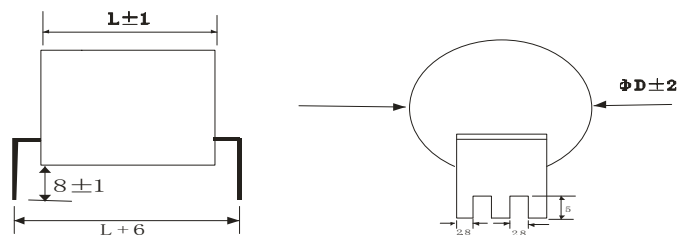
## ▲Part Numbering System

<b>140</b>	<b>CR*</b>	<b>306</b>	<b>#</b>	<b>40</b>
Voltage	Type	Capacitance	Tolerance	Length
220=2000vdc	CRA	474=0.47uf	J= ±5%	40=L=40mm
150=500vdc	CRC	475=4.7uf	K= ±10%	50=L=50mm
140=400vdc	CRD	476=47uf	M= ±20%	

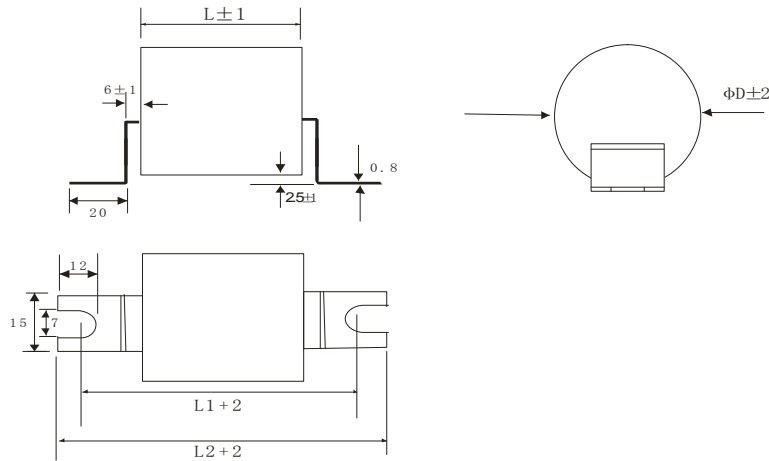
## ▲Outline drawing



Type: A (Bracket)



Type: C



Type: D

▲Electrical specifications

Part Number	CAP μF	Dimension (mm)		du/dt v/μs	I <sub>rms</sub> @25°C @10kHz(A)	ESR@1.0k Hz(m Ω)	Output insert
		L	D				
Un 400Vdc							
140CR*306#40	30	40	45	45	27	1.8	M6
140CR*506#50	50	50	50	32	30	2.0	M6
140CR*806#50	80	50	62	32	40	1.5	M6
140CR*107#60	100	60	60	22	35	2.0	M6
140CR*157#60	150	60	75	22	48	1.5	M6
140CR*207#110	200	110	60	10	35	3.0	M6
140CR*307#110	300	110	72	10	48	2.1	M6

Un 800Vdc							
180CR*206#40	20	40	44	65	25	2.0	M6
180CR*306#50	30	50	46	40	25	2.4	M6
180CR*406#50	40	50	52	40	30	2.0	M6
180CR*506#50	50	50	59	40	35	1.6	M6
180CR*806#60	80	60	66	35	40	1.8	M6
180CR*107#60	100	60	72	30	45	1.8	M6
180CR*157#110	150	110	62	14	35	3.0	M6
180CR*207#110	200	110	71	14	45	2.5	M6

**▲Electrical specifications**

Part Number	CAP μF	Dimension (mm)		du/dt	I <sub>rms</sub> @25°C @10kHz(A)	ESR@1.0k Hz(m Ω )	Output
		L	D	v/μs			insert
Un 1000Vdc							
210CR*156#40	15	40	51	80	23	2.2	M6
210CR*256#50	25	50	54	55	25	2.4	M6
210CR*406#50	40	50	69	55	35	1.8	M6
210CR*506#60	50	60	69	40	33	2.3	M6
210CR*806#60	80	60	86	40	45	1.8	M6
210CR*107#110	100	110	66	20	30	4.0	M6
210CR*157#114	150	114	81	20	45	3.0	M8

Un 2000Vdc							
220CR*106#40	10	60	47	110	85	1.8	M6
220CR*206#40	20	64	66	90	90	2.0	M6
220CR*306#40	30	64	81	80	93	1.5	M6

Un 3000Vdc							
230CR*106#40	10	114	50	110	85	1.8	M8
230CR*206#40	20	114	69	90	90	2.0	M8
230CR*306#40	30	114	82	80	93	1.5	M8

\*Special design available to meet your requirements.