

## ▲主要应用/Application

广泛应用于 UPS, 逆变器, 感应加热, 电焊机等设备的 IGBT 模块吸收保护。

Widely used in UPS, inverter, induction heaters, welding machine for IGBT snubber protection.

## ▲产品特点/Characteristics

电介质：聚丙烯薄膜

结构：双面金属化与金属化膜内串结构

封装：塑料外壳, 阻燃 (94V-0 级) 环氧封装

引出：镀锡铜片引出

能承受高脉冲电流, 高 dv/dt

ESL, ESR 小

具有自愈性

Dielectric: Polypropylene film

Construction: Extended double side metalized carrier film with internal series connection and metalized f

Coating: Resistant plastic case with resin sealing.

Flame retardant execution(UL 94V-0)

Terminals: Tinned copper lugs

High pulse current, high dv/dt

Low ESL and ESR

Self healing

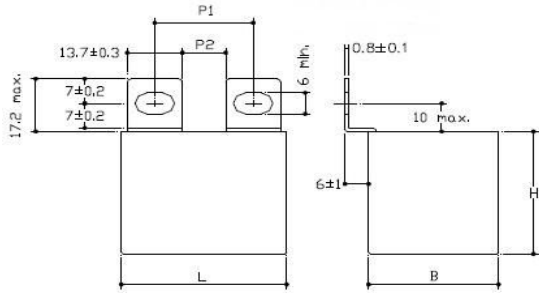


## ▲技术性能/Specifications

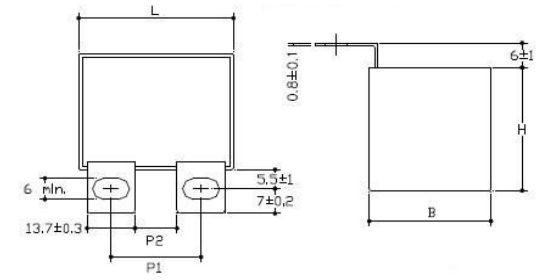
引用标准/Reference standards	IEC 61071 60068	
工作温度范围/Operating temperature range	-40~85℃	
容量范围/Capacitance	0.047~10μF	
额定电压 /Rated Voltage	700~3000VDC	
容量偏差 /Tolerance	±5%, ±10%	
极间耐电压 /Test voltage between terminals	2Ur(DC) 10s 25±5℃	
极壳耐电压 /Test voltage between terminals and case	3000V 50Hz 60S, 25±5℃	
损耗角正切/Dissipation factor	Cr≤1.0μF    tgδ≤5×10 <sup>-4</sup>	at 25±5℃ , 1KHz
	Cr>1.0μF    tgδ≤6×10 <sup>-4</sup>	
绝缘电阻/Insulation resistance	C*IR≥30000S, at 100VDC, 25±5℃, 60S	
预期寿命/Life expectancy	100000h at Ur and 70℃	

## ▲型号编码/Part Numbering System

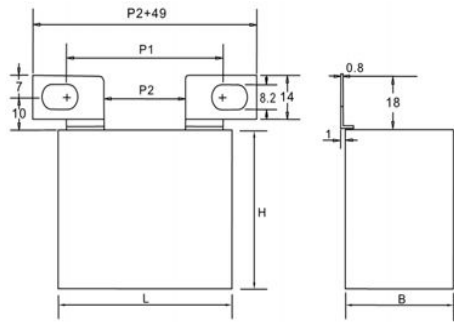
<b>170</b>	<b>FJ</b>	<b>4560</b>	<b>*</b>	<b>1</b>	<b>#</b>
<b>电压</b>	<b>系列</b>	<b>容量</b>	<b>误差</b>	<b>尺寸</b>	<b>接线片方式</b>
<b>Voltage</b>	<b>Type</b>	<b>Capacitance</b>	<b>Tolerance</b>	<b>Size</b>	<b>lug style</b>
170=700vdc	FJ	3100=0.01uf	K= ±10%	1	A
210=1000vdc		4100=0.1uf	J= ±5%	2	AA
212=1200vdc		5100=1.0uf		3	
230=3000vdc		6100=10uf			



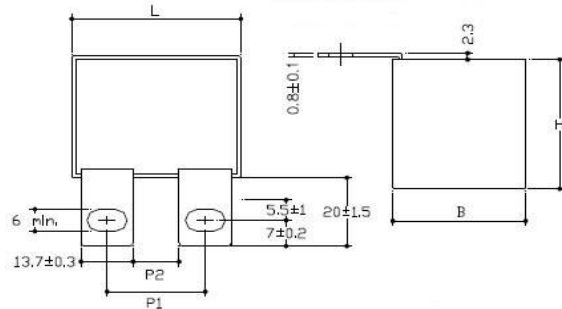
Style A - AA



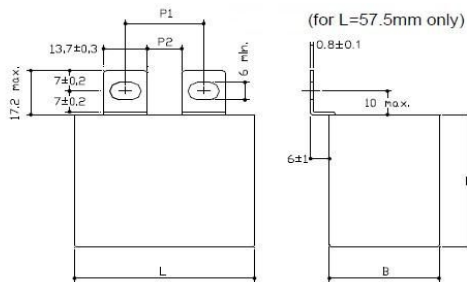
Style C - CA



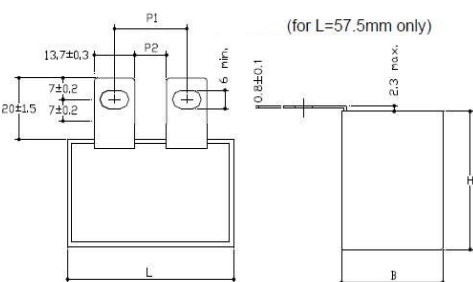
Style B - BA



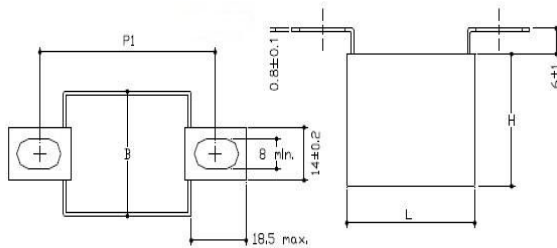
Style N - NA



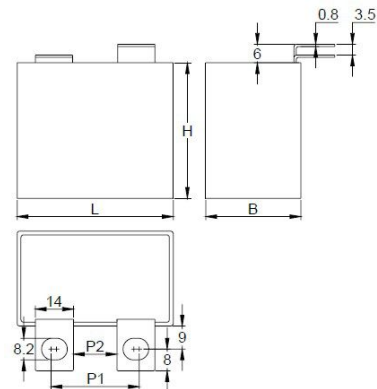
Style R



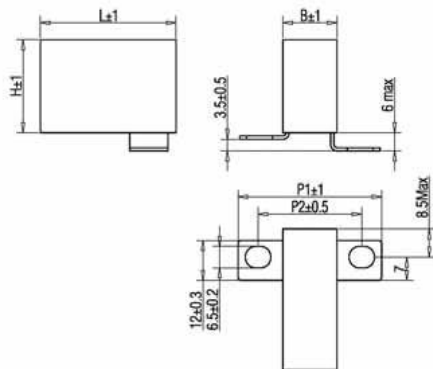
Style Y



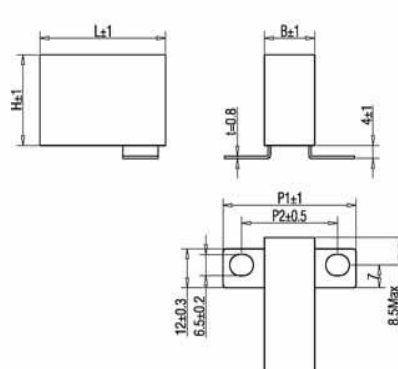
Style E



Style D - DA



Style F



Style FS

▲接线片方式对照表 lug style Comparison Table

Fixing pitch and distance between lugs (mm)				
Lug style	L	P1		P2
		M6	M8	min
A - AM8 C - CM8 D - DM8 N - NM8	42.5	23 - 28	25 - 26	11
AA - AAM8 CA - CAM8 DA - DAM8 NA - NAM8	57.5	37 - 42	39 - 40	24
R - RAM8 Y - YAM8	42.5	Not available		-
	57.5	23 - 28	23 - 26	11
E - EM8	42.5	67 - 73	51 - 64	-
	57.5	82 - 88	65 - 78	-

Fixing slot size(mm)	
A, C, D, R, N, Y, E, B, AA, CA, DA, RA,	A=6min
AM8, CM8, DM8, RM8, AAM8, CAM8 DAM8, RAM8, NAM8, YAM8, EM8, BAM8	A=8min

B(M6) B*11=P2=11 B*15=P2=15 B*28=P2=28	L	P2	P1	P2	P1
	42.5	11	29-39	15	33-45
	57.5	11	29-39	15	33-45
BA(M8) BA*11=P2=11 BA*15=P2=15 BA*28=P2=28	42.5	8	33-42	15	40-49
	57.5	15	40-49	24	49-58
		-	-	28	53-62

\*代表 V 或 S, Denotes Vor S --V=L=42.5 S=L=57.5

Lugs style	B	P1	P2
F-FS	15	43(M6)	30
		45(M6)	32
	17	43(M6)	30
		45(M6)	32

▲Electrical specifications, ordering codes

Ordering Code	Cap (μF)	Dimention(mm)			du/dt (v/μs)	Ipeak (A)	Irms@25°C @10kHz(A)	ESR@10kHz (mΩ)
		L	B	H				
Un 700VDC, Urms 380VAC, Us 1050V								
170FJ5100*1#	1.0	42.5	24.5	27.5	325	325	16.0	3.3
170FJ5100*2#	1.0	42.5	17	27.5	580	590	15.5	3.3
170FJ5120*1#	1.2	42.5	24.5	27.5	600	700	17.0	3.2
170FJ5150*1#	1.5	42.5	22.0	30.0	325	487	19.0	2.9
170FJ5200*1#	2.0	42.5	33.5	35.5	325	650	23.0	2.6
170FJ5200*2#	2.0	42.5	28.0	37.0	325	650	22.5	2.6
170FJ5220*1#	2.2	42.5	33.5	35.5	325	715	23.5	2.5
170FJ5220*2#	2.2	42.5	28.0	37.0	325	715	23.0	2.5
170FJ5250*1#	2.5	42.5	33.5	35.5	325	812	24.0	2.3
170FJ5250*2#	2.5	42.5	28.0	37.0	325	812	23.5	2.3
170FJ5300*1#	3.0	42.5	33.0	45.0	325	975	27.0	2.2
170FJ5300*2#	3.0	42.5	30.0	45.0	325	975	26.5	2.2
170FJ5330*1#	3.3	42.5	33.0	45.0	600	1900	28.5	2.2
170FJ5330*2#	3.3	42.5	30.0	45.0	325	1072	27.0	2.2
170FJ5350*1#	3.5	42.5	33.0	45.0	325	1134	28.0	2.1
170FJ5350*2#	3.5	42.5	30.0	45.0	325	1134	27.5	2.1
170FJ5400*1#	4.0	57.5	30.0	45.0	220	880	28.0	2.4
170FJ5400*2#	4.0	42.5	33.0	45.0	325	1300	33.0	1.9
170FJ5470*1#	4.7	57.5	35.0	50.0	220	1034	32.0	2.2
170FJ5470*2#	4.7	57.5	30.0	45.0	220	1034	31.5	2.2
170FJ5500*1#	5.0	57.5	35.0	50.0	220	1100	32.0	2.2
170FJ5500*2#	5.0	57.5	30.0	45.0	220	1100	31.5	2.2
170FJ5560*1#	5.6	57.5	35.0	50.0	220	1232	33.0	2.1
170FJ5680*1#	6.8	57.5	35.0	50.0	220	1496	33.0	2.1
170FJ6100*1#	10.0	57.5	42.5	56.0	220	2200	34.0	1.4

▲Electrical specifications, ordering codes

Ordering Code	Cap (μF)	Dimention(mm)			du/dt (v/μs)	Ipeak (A)	Irms@25°C @10kHz(A)	ESR@10k Hz(mΩ)
		L	B	H				
<b>Un 850VDC , Urms 450VAC , Us 1275V</b>								
185FJ4820*1#	0.82	42.5	24.5	27.5	770	600	16.5	3.2
185FJ5100*1#	1.0	42.5	24.5	27.5	770	770	18.5	2.8
185FJ5100*2#	1.0	42.5	22.0	30.0	400	400	18.0	2.8
185FJ5150*1#	1.5	42.5	33.5	35.5	400	600	24.0	2.3
185FJ5150*2#	1.5	42.5	28.0	37.0	400	600	23.5	2.3
185FJ5200*1#	2.0	42.5	33.5	35.5	400	800	24.5	2.3
185FJ5220*1#	2.2	42.5	30.0	45.0	400	880	27.5	2.1
185FJ5250*1#	2.5	42.5	33.0	45.0	400	1000	28.0	2.1
185FJ5250*2#	2.5	42.5	30.0	45.0	400	1000	27.5	2.1
185FJ5300*1#	3.0	57.5	30.0	45.0	280	840	29.0	2.0
185FJ5330*1#	3.3	57.5	30.0	45.0	280	924	29.5	2.3
185FJ5400*1#	4.0	57.5	35.0	50.0	280	1120	30.5	2.2
185FJ5470*1#	4.7	57.5	35.0	50.0	280	1316	33.0	2.0
185FJ5680*1#	6.8	57.5	42.5	56.0	280	1904	34.0	1.6
<b>Un 1000VDC , Urms 480VAC , Us 1500V</b>								
210FJ4680*1#	0.68	42.5	24.5	27.5	500	340	16.0	3.4
210FJ4750*1#	0.75	42.5	24.5	27.5	800	650	17.5	3.3
210FJ4750*2#	0.75	42.5	22.0	30.0	500	375	16.0	3.3
210FJ5100*1#	1.0	42.5	28.0	37.0	500	500	18.0	3.0
210FJ5120*1#	1.2	42.5	33.5	35.5	500	600	23.0	2.6
210FJ5120*2#	1.2	42.5	28.0	37.0	500	600	22.5	2.6
210FJ5150*1#	1.5	42.5	33.5	35.5	800	1200	24.5	2.3
210FJ5175*1#	1.75	42.5	33.0	45.0	500	875	24.5	2.2
210FJ5175*2#	1.75	42.5	30.0	45.0	500	875	24.0	2.2
210FJ5200*1#	2.0	42.5	33.0	45.0	800	1700	27.5	2.1
210FJ5220*1#	2.2	57.5	30.0	45.0	350	770	27.5	2.6
210FJ5250*1#	2.5	57.5	30.0	45.0	350	875	29.0	2.2
210FJ5250*2#	2.5	42.5	33.0	45.0	750	1800	25.5	3.0
210FJ5300*1#	3.0	57.5	35.0	50.0	350	1050	32.0	2.2
210FJ5330*1#	3.3	57.5	35.0	50.0	350	1155	32.0	2.1
210FJ5500*1#	5.0	57.5	42.5	56.0	350	1750	34.0	1.7
<b>Un 1200VDC , Urms 500VAC , Us 1800V</b>								
212FJ4220*1#	0.22	42.5	24.5	27.5	650	143	12.5	5.3
212FJ4220*2#	0.22	42.5	15.0	26.0	650	143	12.0	5.3
212FJ4330*1#	0.33	42.5	24.5	27.5	650	210	13.0	5.2
212FJ4330*2#	0.33	42.5	15.0	26.0	650	210	12.5	5.2
212FJ4390*1#	0.39	42.5	24.5	27.5	650	254	14.0	4.7
212FJ4390*2#	0.39	42.5	17.0	28.0	650	254	13.5	4.7
212FJ4470*1#	0.47	42.5	24.5	27.5	1000	450	15.0	4.2
212FJ4470*2#	0.47	42.5	22.0	30.0	650	308	14.5	4.2
212FJ4560*1#	0.56	42.5	22.0	30.0	650	364	15.0	3.8
212FJ4560*2#	0.56	42.5	24.5	27.5	1000	560	15.5	3.8
212FJ4680*1#	0.68	42.5	33.5	35.5	1000	680	20.0	3.4
212FJ4680*2#	0.68	42.5	22.0	30.0	650	442	19.5	3.4
212FJ4820*1#	0.82	42.5	33.5	35.5	650	533	21.0	3.1
212FJ4820*2#	0.82	42.5	28.0	37.0	650	533	20.5	3.1
212FJ5100*1#	1.0	42.5	33.5	35.5	1000	1000	21.5	2.8
212FJ5100*2#	1.0	42.5	28.0	37.0	650	650	21.0	2.8
212FJ5120*1#	1.2	42.5	33.0	45.0	650	780	24.5	2.5

▲Electrical specifications, ordering codes

Ordering Code	Cap ( $\mu$ F)	Dimention(mm)			du/dt (v/ $\mu$ s)	Ipeak (A)	Irms@25°C @10kHz(A)	ESR@10kH z(m $\Omega$ )
		L	B	H				
<b>Un 1200VDC , Urms 500VAC , Us 1800V</b>								
212FJ5120*2#	1.2	42.5	30.0	45.0	650	780	24.0	2.5
212FJ5150*1#	1.5	42.5	33.0	45.0	650	975	26.0	2.2
212FJ5150*2#	1.5	42.5	33.0	35.5	870	1300	25.5	2.2
212FJ5200*1#	2.0	57.5	30.0	45.0	455	910	28.0	1.8
212FJ5220*2#	2.0	42.5	33.0	45.0	870	1700	25.0	3.3
212FJ5220*1#	2.2	42.5	33.0	45.0	870	1700	31.0	2.5
212FJ5220*2#	2.2	57.5	30.0	50.0	455	1001	30.5	2.5
212FJ5250*1#	2.5	57.5	35.0	50.0	455	1138	32.0	2.4
212FJ5300*1#	3.0	57.5	35.0	50.0	455	1365	33.0	2.2
212FJ5450*1#	4.5	57.5	42.5	56.0	455	2047	3.40	1.8
<b>Un 1500VDCc , Urms 570VAC, Us 2250V</b>								
215FJ4330*1#	0.33	42.5	24.5	27.5	800	264	14.5	4.7
215FJ4390*1#	0.39	42.5	22.0	30.0	800	312	14.5	4.4
215FJ4470*1#	0.47	42.5	33.5	35.5	800	376	19.0	3.8
215FJ4470*2#	0.47	42.5	28.0	37.0	800	376	18.5	3.8
215FJ4680*1#	0.68	42.5	33.5	35.5	800	544	20.5	3.2
215FJ4680*2#	0.68	42.5	28.0	37.0	800	544	20.0	3.2
215FJ4750*1#	0.75	42.5	33.5	35.5	800	600	21.5	2.9
215FJ5100*1#	1.0	42.5	33.0	45.0	800	800	24.0	2.6
215FJ5100*2#	1.0	42.5	30.0	45.0	800	800	23.5	2.6
215FJ5120*1#	1.2	57.5	30.0	45.0	560	672	26.0	2.9
215FJ5150*1#	1.5	57.5	35.0	50.0	560	840	29.0	2.6
215FJ5180*1#	1.8	57.5	35.0	50.0	560	1008	30.5	2.4
215FJ5250*1#	2.5	57.5	42.5	56.0	560	1400	32.0	1.9
<b>Un 1700VDC , Urms 575VAC , Us 2550V</b>								
217FJ4220*1#	0.22	42.5	24.5	27.5	880	194	14.2	5.4
217FJ4220*2#	0.22	42.5	17.0	28.0	880	194	14.0	5.4
217FJ4330*1#	0.33	42.5	24.5	27.5	880	290	15.0	5.1
217FJ4330*2#	0.33	42.5	22.0	30.0	880	290	14.5	5.1
217FJ4470*1#	0.47	42.5	33.5	35.5	880	413	20.0	3.9
217FJ4470*2#	0.47	42.5	28.0	37.0	880	413	19.5	3.9
217FJ4560*1#	0.56	42.5	33.5	35.5	880	492	20.5	3.2
217FJ4560*2#	0.56	42.5	28.0	37.0	880	492	20.0	3.2
217FJ4680*1#	0.68	42.5	33.5	35.5	880	598	21.0	3.0
217FJ4820*1#	0.82	42.5	33.0	45.0	880	721	23.1	2.6
217FJ4820*2#	0.82	42.5	30.0	45.0	880	721	20.5	2.6
217FJ5100*1#	1.0	57.5	30.0	45.0	610	610	24.5	2.8
217FJ5120*1#	1.2	57.5	30.0	45.0	610	732	27.2	2.7
217FJ5150*1#	1.5	57.5	35.0	50.0	610	915	29.5	2.5
217FJ5220*1#	2.2	57.5	42.5	56.0	610	1342	31.0	1.9
<b>Un 2000VDC , Urms 630VAC , Us 3000V</b>								
220FJ4100*1#	0.10	42.5	24.5	27.5	1000	100	9.0	13.1
220FJ4100*2#	0.10	42.5	15.0	26.0	1000	100	9.5	13.1
220FJ4150*1#	0.15	42.5	24.5	27.5	1000	150	11.5	7.6
220FJ4150*2#	0.15	42.5	17.0	28.0	1000	150	11.0	7.6
220FJ4220*1#	0.22	42.5	24.5	27.5	1000	220	13.0	5.2
220FJ4220*2#	0.22	42.5	22.0	30.0	1000	220	12.5	5.2
220FJ4330*1#	0.33	42.5	33.5	35.5	1000	330	17.5	4.2
220FJ4330*2#	0.33	42.5	28.0	37.0	1000	330	17.0	4.2
220FJ4390*1#	0.39	42.5	33.5	35.5	1000	390	18.5	3.7
220FJ4390*2#	0.39	42.5	28.0	37.0	1000	390	18.0	3.7
220FJ4470*1#	0.47	42.5	33.0	45.0	1000	470	215	3.3

▲Electrical specifications, ordering codes

Ordering Code	Cap ( $\mu$ F)	Dimention(mm)			du/dt (v/ $\mu$ s)	Ipeak (A)	Irms@25°C @10kHz(A)	ESR@10k Hz(m $\Omega$ )
		L	B	H				
<b>Un 2000VDC, Urms 630VAC, Us 3000V</b>								
220FJ4470*2#	0.47	42.5	28.0	37.0	1000	470	21.0	3.3
220FJ4560*1#	0.56	42.5	33.0	45.0	1000	560	22.5	3.1
220FJ4680*1#	0.68	57.5	30.0	45.0	700	476	23.5	3.6
220FJ4820*1#	0.82	57.5	30.0	45.0	700	574	25.0	3.2
220FJ5100*1#	1.0	57.5	35.0	50.0	1000	900	28.0	2.9
220FJ5120*1#	1.2	57.5	35.0	50.0	700	840	30.0	2.5
220FJ5150*1#	1.5	57.5	35.0	50.0	700	1100	30.0	3.5
220FJU5150*1#	1.5	57.5	35.0	50.0	725	1200	35.5	3.9
220FJ5180*1#	1.8	57.5	42.5	56.0	700	1260	32.0	2.1
<b>Un 2500VDC, Urms 700VAC, Us 3750V</b>								
225FJ4100*1#	0.10	42.5	24.5	27.5	1350	135	10.0	11.3
225FJ4100*2#	0.10	42.5	17.0	28.0	1350	135	9.5	11.3
225FJ4150*1#	0.15	42.5	24.5	27.5	1350	202	12.0	7.3
225FJ4150*2#	0.15	42.5	22.0	30.0	1350	202	11.5	7.3
225FJ4220*1#	0.22	42.5	33.5	35.5	1350	297	16.0	53
225FJ4220*2#	0.22	42.5	28.0	37.0	1350	297	15.5	5.3
225FJ4330*1#	0.33	42.5	33.5	35.5	1350	445	19.0	3.9
225FJ4470*1#	0.47	42.5	33.0	45.0	1350	634	23.0	3.1
225FJ4560*1#	0.56	57.5	30.0	45.0	945	530	23.5	3.6
225FJ4680*1#	0.68	57.5	35.0	50.0	945	642	26.0	3.3
225FJ4820*1#	0.82	57.5	35.0	50.0	945	774	27.0	3.0
225FJ5120*1#	1.2	57.5	42.5	56.0	945	1134	28.0	2.5
<b>Un 3000VDC, Urms 750VAC, Us 4500V</b>								
230FJ3470*1#	0.047	42.5	24.5	27.5	1600	75	8.4	17.1
230FJ3470*2#	0.047	42.5	15.0	26.0	1600	75	8.0	17.1
230FJ3680*1#	0.068	42.5	24.5	27.5	1600	108	10.0	12.1
230FJ3680*2#	0.068	42.5	17.0	28.0	1600	108	9.5	12.1
230FJ4100*1#	0.10	42.5	33.5	35.5	1600	160	13.0	8.4
230FJ4100*2#	0.10	42.5	22.0	30.0	1600	160	125	8.6
230FJ4150*1#	0.15	42.5	33.5	35.5	1600	240	15.5	6.2
230FJ4150*2#	0.15	42.5	28.0	37.0	1600	240	15.0	6.2
230FJ4220*1#	0.22	42.5	33.0	45.0	1600	352	18.6	1.4
230FJ4220*2#	0.22	42.5	30.0	45.0	1600	352	18.0	1.4
230FJ4330*1#	0.33	57.5	30.0	45.0	870	288	22.0	4.3
230FJ4470*1#	0.47	57.5	35.0	50.0	870	408	24.0	4.0
230FJ4560*1#	0.56	57.5	35.0	50.0	870	487	24.0	3.9
230FJ4820*1#	0.82	57.5	42.5	56.0	870	714	27.0	3.1

\*可根据用户需求, 提供定制产品。\*Special design available to meet your requirements.