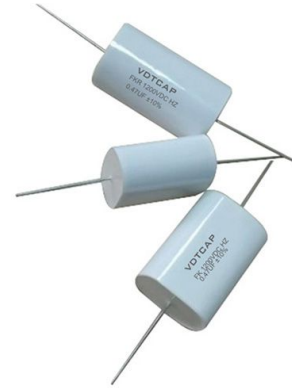


▲主要应用/Application

广泛应用于 UPS, 逆变器, 感应加热, 电焊机等设备的 IGBT 模块吸收保护。

Widely used in UPS, inverter, induction heaters, welding machine for IGBT snubber protection.



▲产品特点/Characteristics

- 金属化聚丙烯薄膜, 轴向
- 自愈性能优异
- 外包聚酯胶带纸, 两端灌注阻燃性环氧树脂
- 损耗小, 内部温升小
- Metallized polypropylene film, Axial-type
- Excellent self-healing property
- Wrapped with polyester adhesive tape and ends filled with flame retardant epoxy resin
- Low loss and small inherent temperature rise

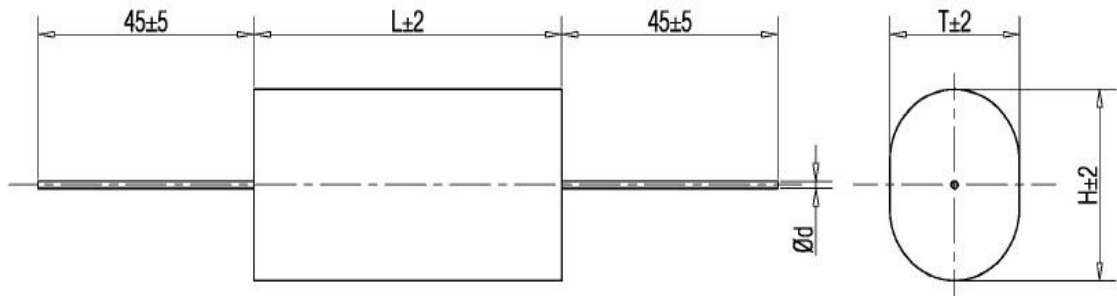
▲技术性能/Specifications

引用标准/Reference standards	IEC 61071 60068
工作温度范围 /Operating temperature range	-40~85℃
容量范围/Capacitance	0.0068 ~ 8.5μF
额定电压 /Rated Voltage	700 ~ 3000VDC
容量偏差 /Tolerance	J(±5%), K(±10%), M(±20%)
极间耐电压 /Test voltage between terminals	1.6Ur(DC) 10s 25±5℃
损耗角正切/Dissipation factor	≤0.0005 (1kHz , 20℃
绝缘电阻/Insulation resistance	C*IR ≥ 30000S, at 100VDC, 25 ± 5℃, 60S
预期寿命/Life expectancy	100000h at Ur and 70℃

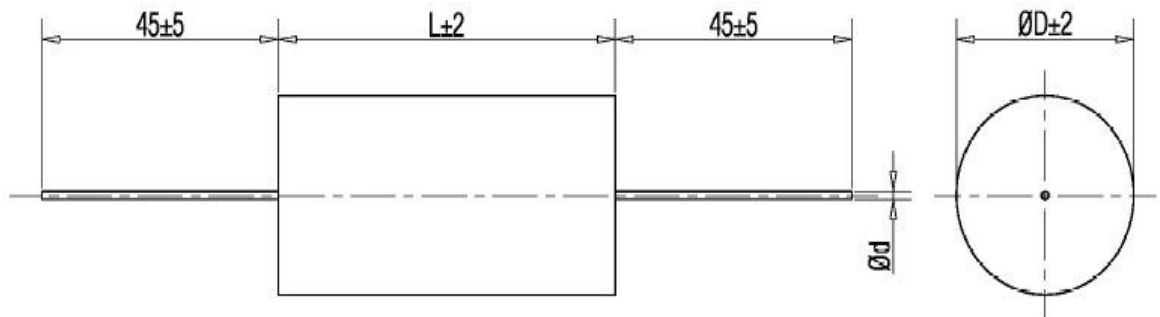
▲型号编码/Part Numbering System

170	FK	104	*	1
电压	系列	容量	误差	尺寸
Voltage	Type	Capacitance	Tolerance	Size
170=700vdc	FK	103=0.01uf	K= ±10%	1
210=1000vdc	FKR	104=0.1uf	J= ±5%	2
212=1200vdc		105=1.0uf		
230=3000vdc		106=10uf		

▲外形图 Outline Drawing



Style:FK



Style:FKR

▲Electrical specifications, ordering codes .

Ordering Code	Cap (μ F)	L	Dimension (mm)				du/dt (v/ μ s)	Ipeak (A)	Irms@25°C @10kHz(A)	ESR@10kHz (m Ω)
			round D	flat, oval T H		d				
Un 700VDC , Urms 380VAC, Us 1050V										
170FK224*1	0.22	32	-	7.9	14.3	0.8	480	106	5.5	9.9
170FK(R)334*1	0.33	32	14.2	9.5	17.5	0.8	480	158	6	6.9
170FK(R)474*1	0.47	32	16.6	11.9	19.9	0.8	480	226	8	4.7
170FK(R)684*1	0.68	32	19.7	14.9	22.9	1.0	480	326	9	3.9
170FK(R)684*2	0.68	44	15.6	10.9	18.9	1.0	325	221	9	4.4
170FK(R)105*1	1.0	44	18.7	13.9	21.9	1.2	325	325	9	3.9
170FK(R)155*1	1.5	44	22.6	16.3	27.5	1.2	325	488	12	3.3
170FK(R)205*1	2.0	44	25.9	19.5	30.7	1.2	325	650	12	3.0
170FK(R)225*1	2.2	44	27.1	20.7	31.9	1.2	325	715	12	2.9
170FK(R)225*2	2.2	57	22.6	16.3	27.5	1.2	240	528	12	3.8
170FK(R)255*1	2.5	44	28.8	22.4	33.6	1.2	325	813	12	3.5
170FK(R)255*2	2.5	57	24.0	17.7	28.9	1.2	240	600	12	3.8
170FK(R)305*1	3.0	44	31.4	25.0	36.2	1.2	325	975	12	3.1

▲Electrical specifications, ordering codes

Ordering Code	Cap (μF)	Dimension (mm)					du/dt (v/μs)	Ipeak (A)	Irms@25°C @10kHz (A)	ESR@10k Hz(mΩ)
		L	round D	flat, oval T H		d				
Un 700VDC , Urms 380VAC , Us 1050V										
170FK(R)305*2	3.0	57	26.2	19.8	31.0	1.2	240	720	12	3.3
170FK(R)335*1	3.3	44	32.9	26.4	37.6	1.2	325	1073	12	2.9
170FK(R)355*1	3.5	57	28.2	21.8	33.0	1.2	240	840	12	2.7
170FK(R)405*1	4.0	57	30.0	23.6	34.8	1.2	240	960	12	2.6
170FK(R)475*1	4.7	57	32.5	26.0	37.2	1.2	240	1128	12	2.5
170FK(R)565*1	5.6	57	35.4	28.8	40.0	1.2	240	1344	12	2.3
170FKR685*1	6.8	57	38.9	-	-	1.2	240	1632	12	2.0
170FKR855*1	8.5	57	43.3	-	-	1.2	240	2040	12	1.6
Un 850VDC , Urms 450VAC , Us 1275V										
185FK104*1	0.10	32	-	5.9	12.3	0.8	700	70	4	11.5
185FK154*1	0.15	32	-	7.6	14.0	0.8	700	105	5.5	8.6
185FK(R)224*1	0.22	32	13.7	9.1	17.1	0.8	700	154	6.5	6.5
185FK(R)224*2	0.22	44	11.1	7.1	13.5	0.8	400	88	6.5	7.9
185FK(R)334*1	0.33	32	16.4	11.7	19.7	1.0	700	231	8	4.8
185FK(R)334*2	0.33	44	13.2	8.5	16.5	1.0	400	132	7.5	6.2
185FK(R)474*1	0.47	32	19.3	14.6	22.6	1.0	700	329	9	9.5
185FK(R)474*2	0.47	44	15.4	10.7	18.7	1.0	400	188	9	5.3
185FK(R)684*1	0.68	44	18.2	13.5	21.5	1.0	400	272	9	3.2
185FK(R)105*1	1.0	44	21.8	15.6	26.8	1.2	400	400	12	3.3
185FK(R)155*1	1.5	44	26.4	20.1	31.3	1.2	400	600	12	2.8
185FK(R)205*1	2.0	44	30.4	23.9	35.1	1.2	400	800	12	3.0
185FK(R)225*1	2.2	44	31.8	25.3	36.5	1.2	400	880	12	2.3
185FK(R)225*2	2.2	57	26.5	20.1	31.3	1.2	290	638	12	2.8
185FK(R)255*1	2.5	44	33.8	27.3	38.5	1.2	400	1000	12	2.6
185FK(R)255*2	2.5	57	28.1	21.7	32.9	1.2	290	725	12	2.8
185FK(R)305*1	3.0	57	30.7	24.3	35.5	1.2	290	870	12	2.6
185FK(R)335*1	3.3	57	32.2	25.7	36.9	1.2	290	957	12	2.4
185FK(R)405*1	4.0	57	35.3	28.8	40.0	1.2	290	1160	12	2.3
185FKR475*1	4.7	57	38.2	-	-	1.2	290	1363	12	2.0
185FKR565*1	5.6	57	41.6	-	-	1.2	290	1624	12	1.7
Un 1000VDC , Urms 480VAC , Us 1500V										
210FK104*1	0.10	32	-	7.7	12.5	0.8	850	85	5	12
210FK154*1	0.15	32	-	9.1	15.5	0.8	850	128	6	8.2
210FK(R)224*1	0.22	32	15.6	10.9	18.9	1.0	850	187	7	7.8
210FK(R)334*1	0.33	32	18.7	14.0	22.0	1.0	850	281	9	4.5
210FK(R)334*2	0.33	44	14.9	10.2	18.2	1.0	570	188	9	5.8
210FK(R)474*1	0.47	32	22.1	15.9	27.1	1.0	850	400	9	3.8
210FK(R)474*2	0.47	44	17.5	12.8	20.8	1.0	570	268	9	4.7
210FK(R)684*1	0.68	44	20.8	14.6	25.8	1.0	570	388	9	4.0
210FK(R)105*1	1.0	44	25.0	18.6	29.8	1.2	570	570	12	3.2
210FK(R)155*1	1.5	44	30.3	23.9	35.1	1.2	570	855	12	3.6
210FK(R)155*2	1.5	57	25.2	18.9	30.1	1.2	340	510	12	3.9
210FK(R)205*1	2.0	57	29.0	22.6	33.8	1.2	340	680	12	3.0
210FK(R)225*1	2.2	57	30.3	23.9	35.1	1.2	340	748	12	2.7
210FK(R)305*1	3.0	57	35.3	28.7	39.9	1.2	340	1020	12	2.4
210FK(R)335*1	3.3	57	36.9	32.9	39.3	1.2	340	1122	12	2.1
210FKR405*1	4.0	57	40.6	-	-	1.2	340	1360	12	1.8
210FKR475*1	4.7	57	43.9	-	-	1.2	340	1598	12	1.6

▲Electrical specifications, ordering codes

Ordering Code	Cap (μF)	Dimension (mm)					du/dt (v/μs)	Ipeak (A)	Irms@25°C @10kHz(A)	ESR@10k Hz(mΩ)
		L	round D	flat, oval T H		d				
Un 1200VDC , Urms 500VAC, Us 1800V										
212FK473*1	0.04	32	-	5.5	10.3	0.8	1100	52	3	19.4
212FK683*1	0.06	32	-	6.9	11.7	0.8	1100	75	3.5	12.0
212FK104*1	0.10	32	-	11.0	18.0	0.8	1100	110	5	10.7
212FK(R)104*2	0.10	34	10.7	6.7	13.1	0.8	840	84	5	11.8
212FK(R)104*3	0.10	44	9.8	5.8	12.2	0.8	650	65	5	13.1
212FK(R)154*1	0.15	32	14.3	9.6	17.6	1.0	1100	165	6	7.7
212FK(R)154*2	0.15	32	12.7	14.4	20.7	1.0	840	126	6	8.7
212FK(R)154*3	0.15	44	11.5	7.5	13.9	1.0	650	98	6	10.0
212FK(R)224*1	0.22	32	17.0	12.3	20.3	1.0	1100	242	9	5.4
212FK(R)224*2	0.22	32	15.0	17.5	23.3	1.0	840	185	9	6.0
212FK(R)224*3	0.22	44	13.6	8.9	16.9	1.0	650	143	9	7.6
212FK(R)334*1	0.33	32	20.5	15.7	23.7	1.0	1100	363	9	4.5
212FK(R)334*2	0.33	44	18.1	14.3	24.0	1.0	840	277	9	4.8
212FK(R)334*3	0.33	44	16.3	11.6	19.6	1.0	650	215	9	5.4
212FK(R)474*1	0.47	37	21.3	15.1	26.3	1.0	840	395	9	4.0
212FK474*2	0.47	44	-	17.5	27.1	1.0	840	395	9	4.0
212FK(R)474*3	0.47	44	19.7	14.4	22.4	1.0	650	306	9	4.8
212FK(R)684*1	0.68	37	25.4	19.0	30.2	1.2	840	571	12	2.9
212FK684*2	0.68	44	-	21.7	31.1	1.2	840	571	12	2.9
212FK(R)684*3	0.68	44	22.8	16.5	27.7	1.2	650	442	12	3.9
212FK(R)105*1	1.0	44	27.4	21.0	32.2	1.2	650	650	12	3.4
212FK105*2	1.0	44	-	26.5	36.1	1.2	650	650	12	3.4
212FK(R)105*3	1.0	57	22.8	16.5	27.7	1.2	485	485	12	3.8
212FK(R)125*1	1.2	44	29.9	23.4	34.6	1.2	650	780	12	3.0
212FK(R)125*2	1.2	57	24.9	18.5	29.7	1.2	485	462	12	3.4
212FK(R)155*1	1.5	44	33.3	26.8	38.0	1.2	650	975	12	2.7
212FK155*2	1.5	54	-	27.6	40.0	1.2	650	975	12	2.7
212FK(R)155*3	1.5	57	27.7	21.3	32.5	1.2	485	578	12	3.0
212FK(R)205*1	2.0	57	31.8	25.3	36.5	1.2	485	770	12	2.6
212FK(R)225*1	2.2	57	33.3	26.8	38.0	1.2	485	847	12	2.5
212FK(R)255*1	2.5	57	35.4	28.9	40.1	1.2	485	963	12	2.3
212FKR305*1	3.0	57	38.7	-	-	1.2	485	1155	12	2.0
212FKR335*1	3.3	57	40.6	-	-	1.2	485	1270	12	1.7
212FKR405*1	4.0	57	44.6	-	-	1.2	485	1540	12	1.5
Un 1500VDC , Urms 570VAC, Us 2250V										
215FK683*1	0.06	32	-	8.5	14.9	0.8	1225	83	4	13.8
215FK(R)104*1	0.10	32	14.7	10.0	18.0	0.8	1225	123	5.5	9.6
215FK(R)154*1	0.15	32	17.7	13.0	21.0	1.0	1225	184	7	7.2
215FK(R)224*1	0.22	32	21.1	14.9	26.1	1.0	1225	270	9	5.3
215FK(R)224*2	0.22	44	16.8	12.1	20.1	1.0	800	176	9	7.0
215FK(R)334*1	0.33	44	20.2	15.5	23.5	1.0	800	264	9	5.3
215FK(R)474*1	0.47	44	23.9	17.6	28.8	1.2	800	376	11	4.3
215FK(R)684*1	0.68	44	28.5	22.1	33.3	1.2	800	544	12	3.7
215FK(R)105*1	1.0	44	34.4	27.9	39.1	1.2	800	800	12	3.2
215FK(R)105*2	1.0	57	28.6	22.2	33.4	1.2	570	570	12	3.7
215FK(R)125*1	1.2	57	31.2	24.8	36.0	1.2	570	684	12	3.4
215FK(R)155*1	1.5	57	34.8	28.3	39.5	1.2	570	855	12	2.9
215FKR205*1	2.0	57	40.0	-	-	1.2	570	1140	12	2.5
215FKR225*1	2.2	57	41.9	-	-	1.2	570	1254	12	2.3
215FKR255*1	2.5	57	44.6	-	-	1.2	570	1425	12	2.1

▲Electrical specifications, ordering codes

Ordering Code	Cap (μF)	L	Dimension (mm)				d	du/dt (v/μs)	Ipeak (A)	I _{rms} @25°C @10kHz(A)	ESR@10k Hz(mΩ)
			round D	flat, oval							
Un 1700VDC , Urms 575VAC, Us 2550V											
217FK333*1	0.033	32	-	5.9	12.3	0.8	1350	45	3.9	24.6	
217FK473*1	0.047	32	-	7.4	13.8	0.8	1350	63	4.0	18.2	
217FK(R)104*1	0.10	32	15.8	11.1	19.1	0.8	1350	135	5.7	9.3	
217FK(R)154*1	0.15	32	19.1	14.3	22.3	1.0	1350	203	8.0	7.0	
217FK(R)224*1	0.22	32	22.8	16.5	27.7	1.0	1350	297	9.0	5.2	
217FK(R)224*2	0.22	44	18.1	13.3	21.3	1.0	880	194	9.0	6.8	
217FK(R)334*1	0.33	44	21.8	15.6	26.8	1.0	880	290	9.0	4.9	
217FK(R)474*1	0.47	44	25.8	19.5	30.7	1.2	880	414	12	4.0	
217FK(R)684*1	0.68	44	30.8	24.4	35.6	1.2	880	598	12	3.5	
217FK(R)105*1	1.0	44	37.2	30.6	41.8	1.2	880	880	12	3.0	
217FK(R)105*2	1.0	57	30.9	24.4	35.6	1.2	610	610	12	3.4	
217FK(R)125*1	1.2	57	33.8	27.2	38.4	1.2	610	732	12	3.1	
217FK(R)155*1	1.5	57	37.6	-	-	1.2	610	915	12	2.6	
217FK(R)205*1	2.0	57	43.3	-	-	1.2	610	1220	12	2.4	
Un 2000VDC , Urms 630VAC, Us 3000V											
220FK223*1	0.022	32	-	5.4	11.8	0.8	1750	39	2.5	34.5	
220FK333*1	0.033	32	-	7.0	13.4	0.8	1750	58	3.5	23.7	
220FK473*1	0.047	32	-	8.1	16.1	0.8	1750	82	4.5	16.8	
220FK(R)473*1	0.047	44	10.4	6.4	12.8	0.8	1000	47	4	21.0	
220FK(R)683*1	0.068	32	15.0	10.3	18.3	1.0	1750	119	5.5	11.8	
220FK(R)683*2	0.068	44	12.1	8.1	14.5	0.8	1000	68	5.5	16.3	
220FK(R)104*1	0.10	32	17.8	13.1	21.1	1.0	1750	175	7.5	8.4	
220FK(R)104*2	0.10	44	14.2	9.6	17.6	1.0	1000	100	7	12.4	
220FK(R)154*1	0.15	44	17.1	12.4	20.4	1.0	1000	150	9	6.6	
220FK(R)224*1	0.22	44	20.4	15.6	23.6	1.0	1000	220	9	6.0	
220FK(R)334*1	0.33	44	24.7	18.4	29.6	1.2	1000	330	12	4.7	
220FK(R)474*1	0.47	44	29.9	23.4	34.6	1.2	1000	473	12	3.9	
220FK(R)565*1	0.56	44	32.4	25.9	37.1	1.2	1000	560	12	3.6	
220FK(R)564*2	0.56	57	26.5	20.1	31.3	1.2	640	358	12	4.5	
220FK(R)684*1	0.68	57	29.1	22.7	33.9	1.2	640	435	12	4.0	
220FK(R)105*1	1.0	57	35.1	28.6	39.8	1.2	640	640	12	3.3	
220FKR125*1	1.2	57	38.3	-	-	1.2	640	768	12	3.0	
220FKR155*1	1.5	57	42.8	-	-	1.2	640	960	12	2.2	
Un 2500VDC , Urms 700VAC, Us 3750V											
225FK223*1	0.022	32	-	6.9	13.3	0.8	2150	47	3.5	24.0	
225FK333*1	0.033	32	-	8.2	16.2	0.8	2150	71	4	22.7	
225FK(R)473*1	0.047	32	15.0	10.3	18.3	0.8	2150	101	5	15.5	
225FK(R)683*1	0.068	32	17.3	13.0	21.0	1.0	2150	146	6.5	11.1	
225FK(R)104*1	0.10	32	21.3	15.0	26.2	1.0	2150	215	8.5	7.8	
225FK(R)104*2	0.10	44	16.9	12.1	20.1	1.0	1350	135	8.5	12.2	
225FK(R)154*1	0.15	44	20.4	15.6	23.6	1.0	1350	203	9	8.1	
225FK(R)224*1	0.22	44	24.4	18.1	29.3	1.2	1350	297	11	5.9	
225FK(R)334*1	0.33	44	29.6	23.2	34.4	1.2	1350	446	12	4.5	
225FK(R)334*2	0.33	57	24.7	18.3	29.5	1.2	880	290	12	5.4	
225FK(R)474*1	0.47	57	29.2	22.8	34.0	1.2	880	414	12	4.4	
225FK(R)684*1	0.68	57	34.9	28.4	39.6	1.2	880	598	12	3.7	
225FKR824*1	0.82	57	38.3	-	-	1.2	880	722	12	3.3	
225FKR105*1	1.0	57	42.2	-	-	1.2	880	880	12	2.8	

▲Electrical specifications, ordering codes

Ordering Code	Cap (μ F)	Dimension (mm)					du/dt (v/ μ s)	I _{peak} (A)	I _{rms@25°C} @10kHz (A)	ESR@10k Hz(m Ω)
		L	round	flat, oval		d				
			D	T	H					
Un 3000VDC , Urms 750VAC , Us 4500V										
230FK682*1	0.006	32	–	5.1	9.9	0.8	2750	19	1.5	89.0
230FK103*1	0.010	32	–	5.9	12.3	0.8	2750	28	2	61.0
230FK153*1	0.015	32	–	7.1	13.5	0.8	2750	41	3	42.5
230FK(R)223*1	0.022	32	13.1	8.4	16.4	0.8	2750	61	4	28.5
230FK(R)333*1	0.033	32	15.7	11.0	19.0	1.0	2750	91	5	19.7
230FK(R)473*1	0.047	32	18.4	13.7	21.7	1.0	2750	129	6.5	13.8
230FK(R)473*2	0.047	44	14.7	10.0	18.0	1.0	1600	75	6	17.8
230FK(R)683*1	0.068	44	17.3	12.6	20.6	1.0	1600	109	8	12.8
230FK(R)104*1	0.10	44	20.7	14.5	25.7	1.2	1600	160	11	9.4
230FK(R)154*1	0.15	44	25.1	18.8	30.0	1.2	1600	240	12	6.8
230FK(R)224*1	0.22	44	30.2	23.7	34.9	1.2	1600	352	12	5.2
230FK(R)224*2	0.22	57	25.1	18.8	30.0	1.2	990	218	12	5.9
230FK(R)334*1	0.33	57	30.5	24.1	35.3	1.2	990	327	12	4.9
230FK(R)394*1	0.39	57	33.1	26.6	37.8	1.2	990	386	12	4.4
230FK(R)474*1	0.47	57	36.3	–	–	1.2	990	465	12	4.0
230FK(R)684*1	0.68	57	43.4	–	–	1.2	990	673	12	3.5

*可根据用户需求，提供定制产品。*Special design available to meet your requirements.