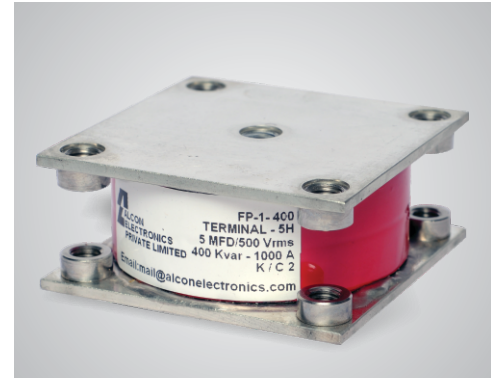


FP-1-400

Highlights

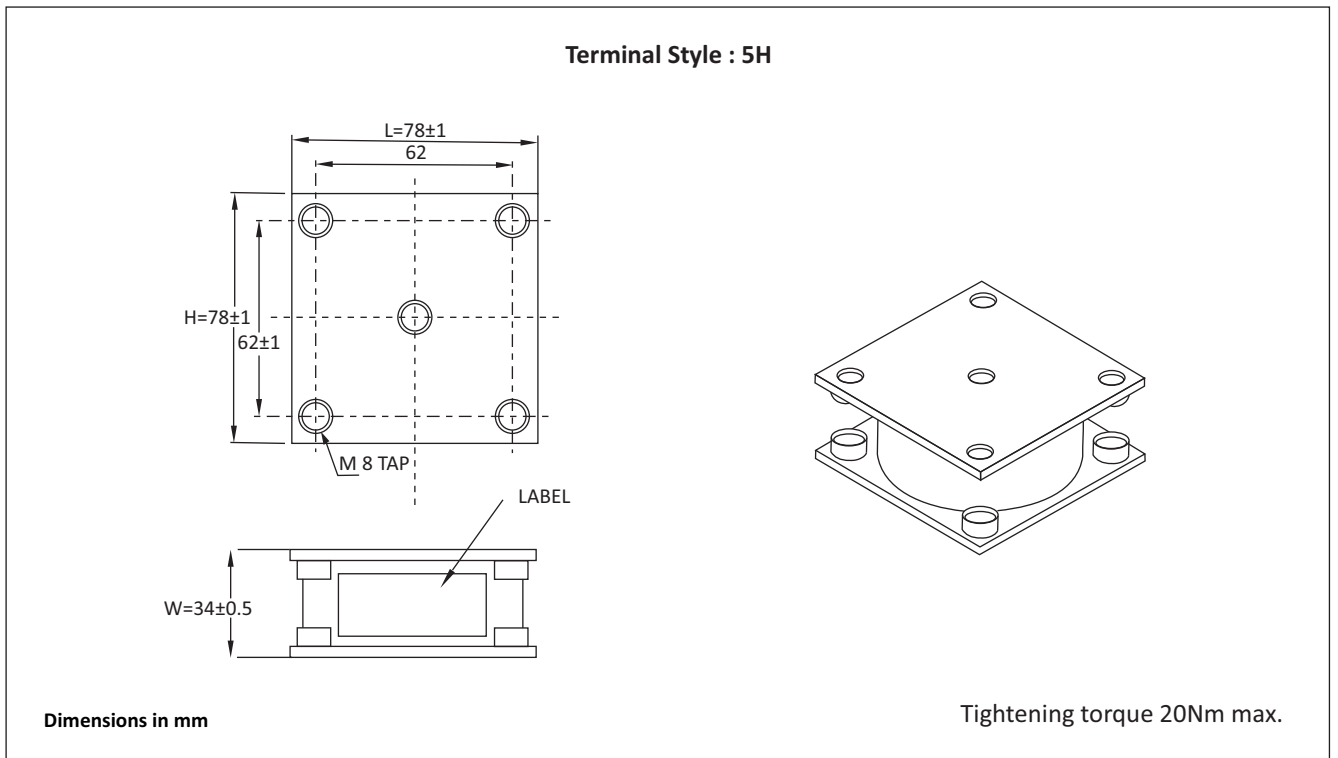
- Conduction cooled
- Polypropylene dielectric
- Self-healing
- Stray inductance < 5nH
- Operating frequency up to 1000 KHz
- Maximum operating core temperature 85°C



Standard Capacitor Values

Rated Voltage Vrms	Nominal capacitance MFD at 1KHz	Max current Irms	Max power Kvar	Frequency KHz	ESR mΩ	Dimensions mm			Terminal Style	Ordering Code
						B	H	L		
1000	0.33	600	400	194-433	1.0	34	78	78	5H	SP0U331000A1K05H0FP1
	0.66	600	400	95-216	0.8	34	78	78	5H	SP0U661000A1K05H0FP1
900	1.20	850	400	66-239	0.3	34	78	78	5H	SP1U200900A1K05H0FP1
	1.32	850	400	58-215	0.3	34	78	78	5H	SP1U320900A1K05H0FP1
700	2.60	950	400	51-138	0.2	34	78	78	5H	SP2U600700A1K05H0FP1
500	5.00	1000	400	50-80	0.1	34	78	78	5H	SP5U000500A1K05H0FP1

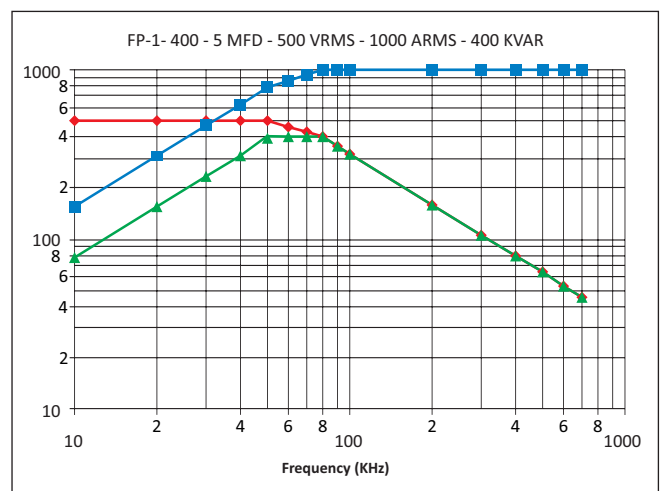
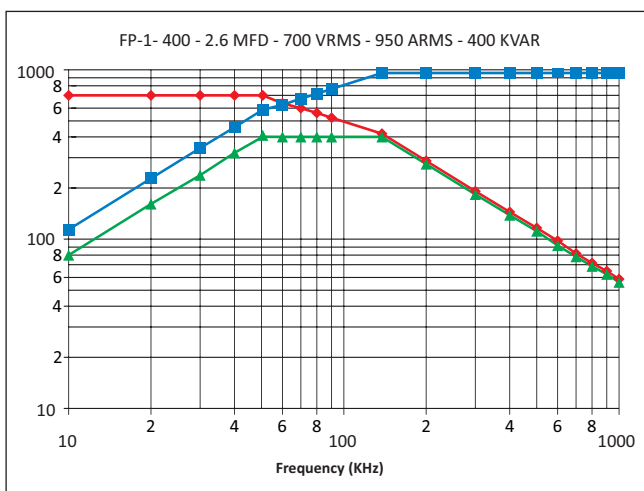
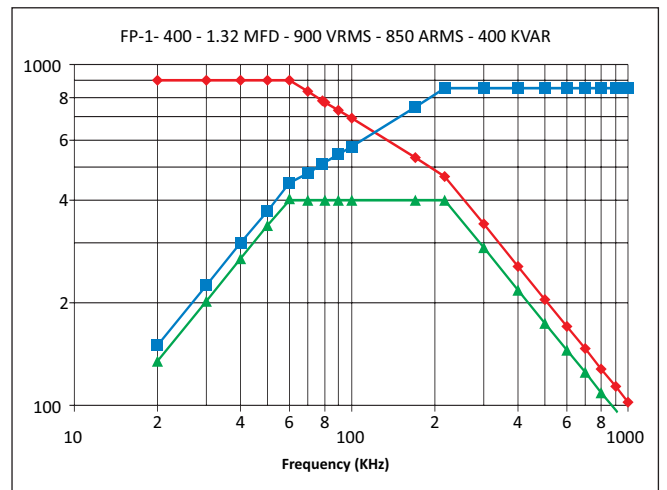
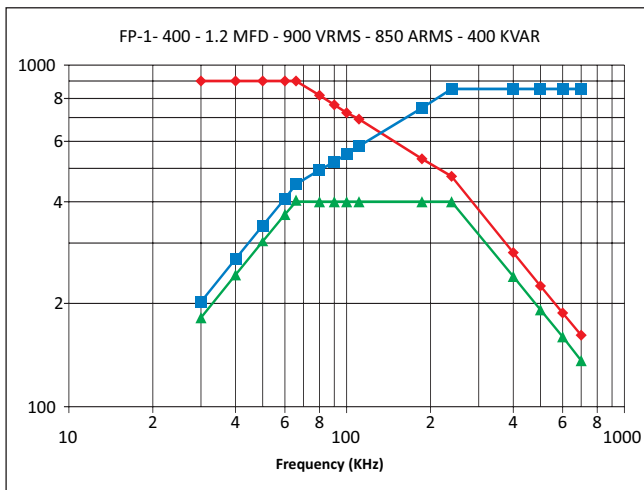
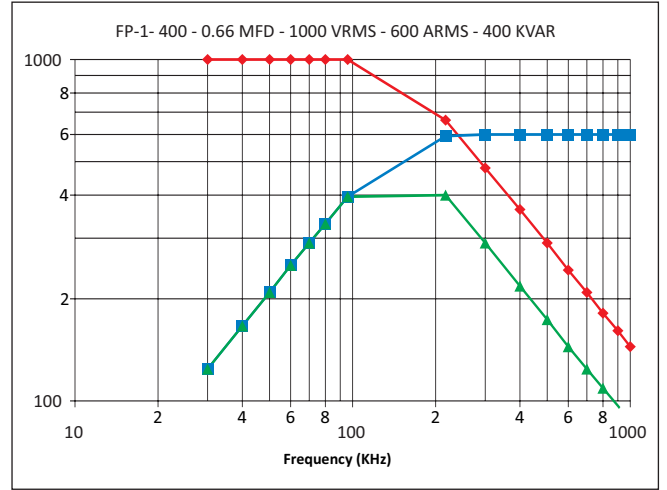
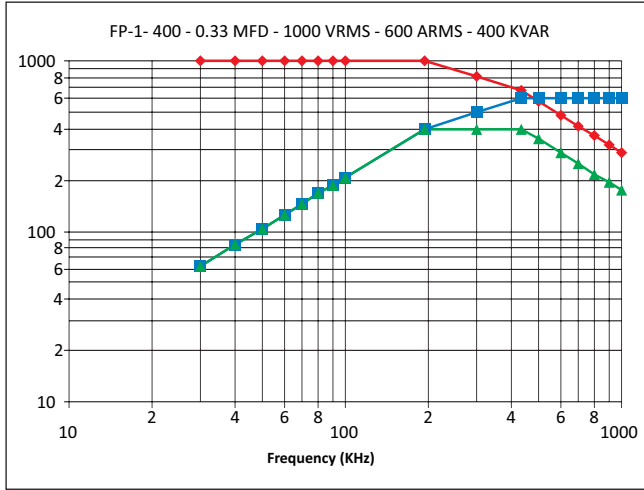
Capacitor Drawing and Terminal Style



FP-1-400

Frequency Derating

—●— Voltage —■— Current —▲— Power



Catalogue No. AEPL FP-1-400-SEPT-2013

The specification shown herein (page 1 to 2) pertain to the current manufacturing range of the Company. The Company reserves the right to change and /or modify any part of or whole of the specifications as a result of research and development and as may be necessary, without prior notice