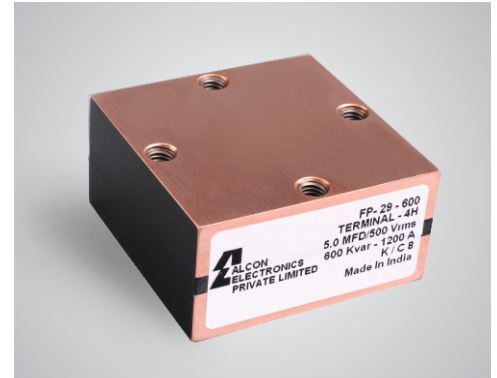


FP-29-600

Highlights

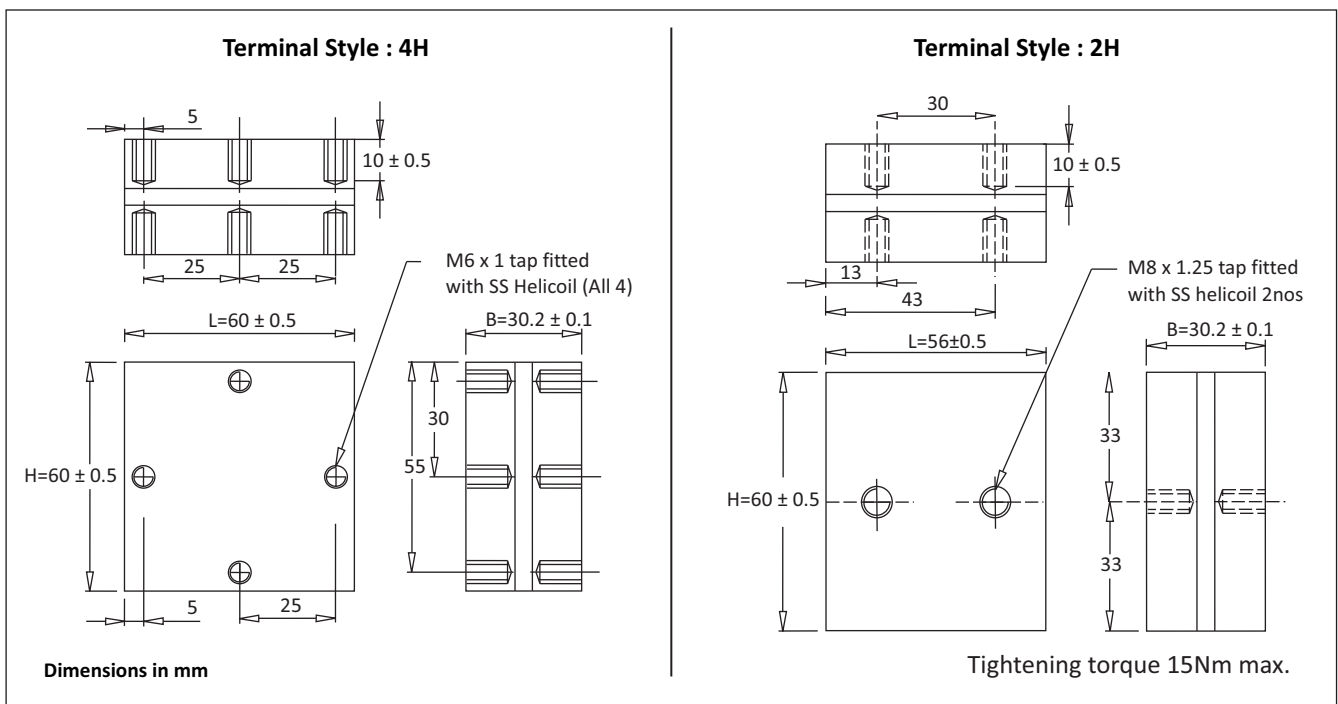
- Conduction cooled
- Polypropylene dielectric
- Self-healing
- Stray inductance < 5nH
- Operating frequency up to 1000 KHz
- Maximum operating core temperature 85°C



Standard Capacitor Values

Rated Voltage Vrms	Normal capacitance MFD at 1KHz	Max current Irms	Max power Kvar	Frequency KHz	ESR mΩ	Dimensions mm			Terminal Style	Ordering Code
						B	H	L		
1000	0.33	600	600	290	1.0	30.2	60	60	4H	SP0U331000U1K04HFP29
	0.33	600	600	290	1.0	30.2	66	56	2H	SP0U331000U2K02HFP29
	0.50	700	600	191-260	0.9	30.2	60	60	4H	SP0U501000U1K04HFP29
	0.50	700	600	191-260	0.9	30.2	66	56	2H	SP0U501000U2K02HFP29
	0.66	700	600	145-197	0.8	30.2	60	60	4H	SP0U661000U1K04HFP29
	0.66	700	600	145-197	0.8	30.2	66	56	2H	SP0U661000U2K02HFP29
900	1.32	950	600	89-180	0.3	30.2	60	60	4H	SP1U320900U1K04HFP29
	1.32	950	600	89-180	0.3	30.2	66	56	2H	SP1U320900U2K02HFP29
700	2.50	1050	600	76-112	0.3	30.2	60	60	4H	SP2U500700U1K04HFP29
	2.50	1050	600	76-112	0.3	30.2	66	56	2H	SP2U500700U2K02HFP29
500	5.00	1200	600	76	0.2	30.2	60	60	4H	SP5U000500U1K04HFP29
	5.00	1200	600	76	0.2	30.2	66	56	2H	SP5U000500U2K02HFP29

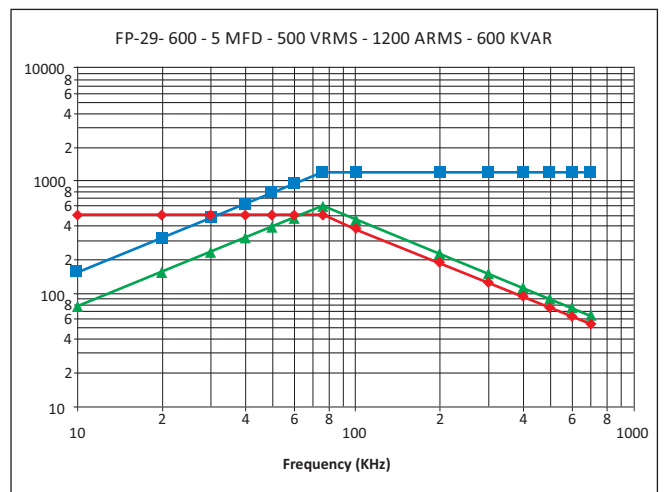
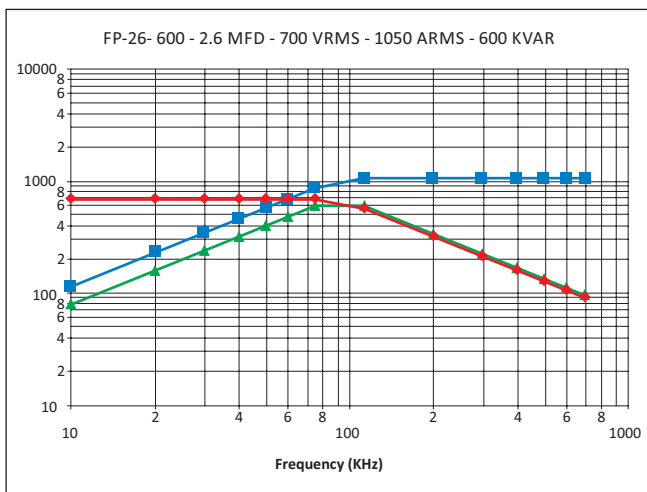
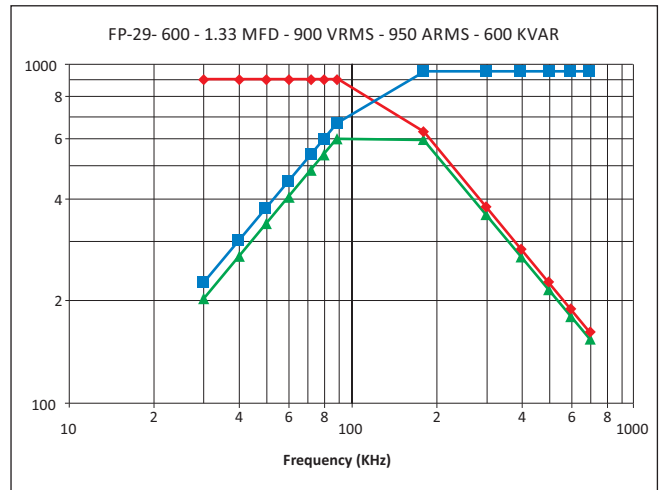
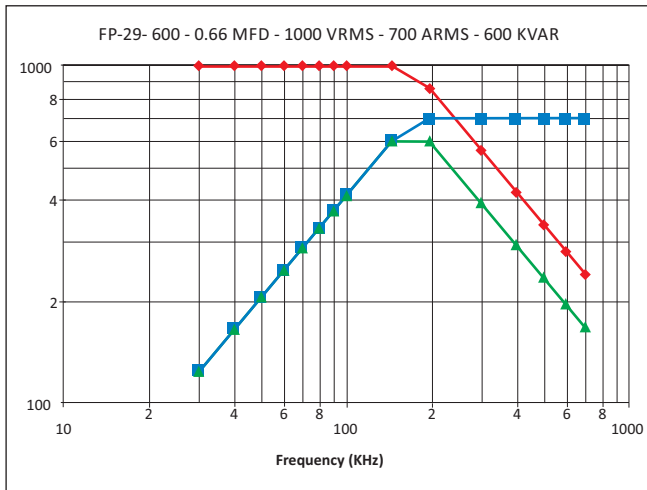
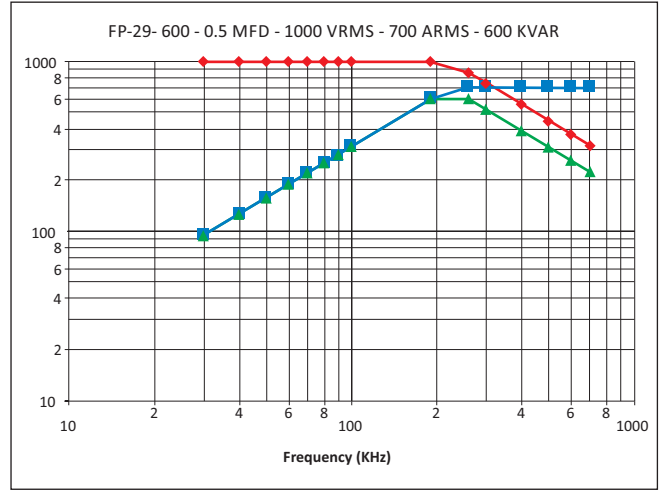
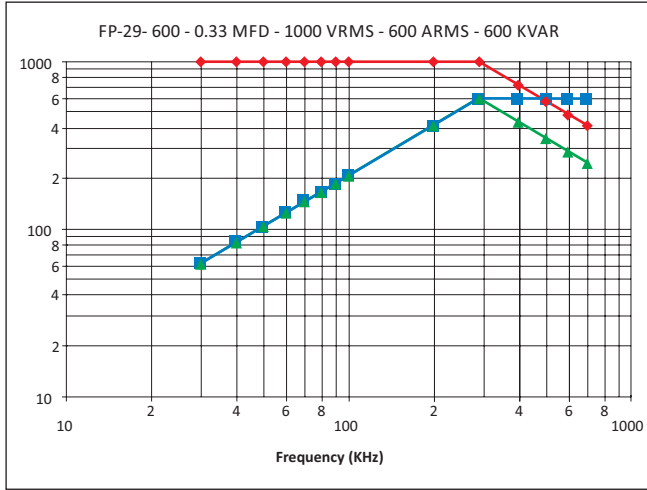
Capacitor Drawing and Terminal Style



FP-29-600

Frequency Derating

—●— Voltage —■— Current —▲— Power



Catalogue No. AEPL FP-29-300-SEPT-2013

The specification shown herein (page 1 to 2) pertain to the current manufacturing range of the Company. The Company reserves the right to change and /or modify any part of or whole of the specifications as a result of research and development and as may be necessary, without prior notice