

GENERAL TECHNICAL CHARACTERISTICS

Reference standards : IEC 61071-60068
 Dielectric : Polypropylene film
 Construction : Dry construction, filled by solid resin,
 Non-inductive type
 Case : Aluminium case



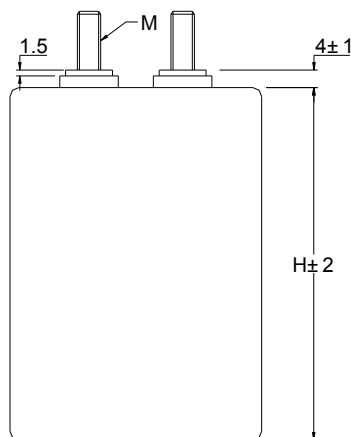
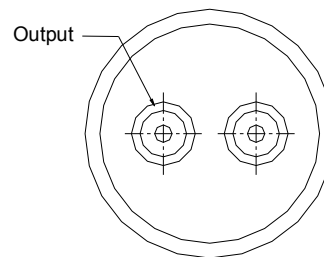
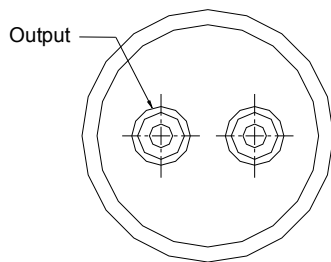
ELECTRICAL CHARACTERISTICS

Working temperature : -40 to + 85 °C
 Capacitance : 100 to 1100µF
 Rated Voltage : 700 to 1100 Vdc
 Tolerance : ± 5% ± 10%
 Dissipation factor: $\leq 2.0 \times 10^{-3}$ Measured at 1000 Hz and 25°C
 Life expectancy : 100,000 hours at Un and 70°C

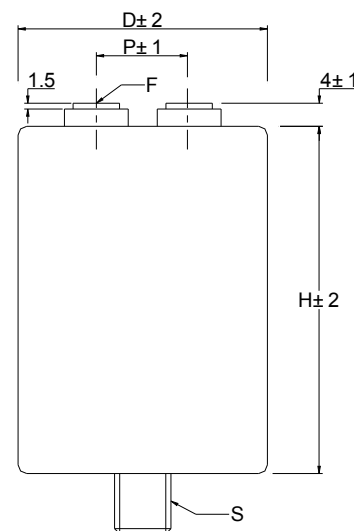
TEST METHODS AND PERFORMANCES

Test voltage between terminals : 1.5xUn for 10s at 25 °C
 Test voltage terminal to case : 3 KV 50Hz for 2sec
 Insulation resistance (C*Ri) : ≥ 5000 s

DESIGN



Clamp mounting



Stud mounting

Case	Out put				Stud mounting		
	F	Torque	M	Torque	P	S	Torque
D=55	M5×8	2.5 N.M Max			22.0	M10× 12	6.0 N.M Max
D=60,65	M5×8	2.5 N.M Max			28.6	M12× 16	8.0 N.M Max
D=76,86	M6×8	4.5 N.M Max	M8*20	8.5 N.M Max	32.0		

PROTECTION AGAINST OVERVOLTAGES

1.1 × Un	30% of the service period
1.15 × Un	30 min/d
1.2 × Un	5 min/d
1.3 × Un	1 min/d
1.5 × Un	100 ms no more than 1000 times

Electrical specifications, ordering codes

Part Number	Capacitance (µF)	Diameter (mm)	Height (mm)	P (mm)	Irms max. (A)	ESR (mΩ)	Rth (k/W)	Weight (g)
Un dc 700V								
SHD-700-210	210	55	120	22.0	30	6.1	5.1	0.35
SHD-700-260	260	60	120	28.6	33	5.1	4.7	0.40
SHD-700-310	310	65	120	28.6	37	4.5	4.4	0.45
SHD-700-420	420	76	120	32.0	44	3.6	3.9	0.65
SHD-700-550	550	86	120	32.0	51	3.0	3.5	0.85
SHD-700-820	820	76	225	32.0	75	2.4	2.0	1.25
SHD-700-1100	1100	86	225	32.0	85	2.1	1.8	1.50
Un dc 900V								
SHD-900-150	150	55	120	22.0	30	5.8	5.1	0.35
SHD-900-180	180	60	120	28.6	34	5.0	4.7	0.40
SHD-900-220	220	65	120	28.6	37	4.4	4.4	0.45
SHD-900-300	300	76	120	32.0	44	3.5	3.9	0.65
SHD-900-390	390	86	120	32.0	51	3.0	3.5	0.85
SHD-900-550	550	76	225	32.0	73	2.5	2.0	1.25
SHD-900-750	750	86	225	32.0	82	2.2	1.8	1.50
Un dc 1100V								
SHD-1100-100	100	55	120	22.0	29	6.9	5.1	0.35
SHD-1100-125	125	60	120	28.6	32	5.8	4.7	0.40
SHD-1100-150	150	65	120	28.6	35	5.0	4.4	0.45
SHD-1100-200	200	76	120	32.0	41	4.1	3.9	0.65
SHD-1100-270	270	86	120	32.0	48	3.4	3.5	0.85
SHD-1100-400	400	76	225	32.0	70	2.7	2.0	1.25
SHD-1100-500	500	86	225	32.0	78	2.4	1.8	1.50

How to Order:

