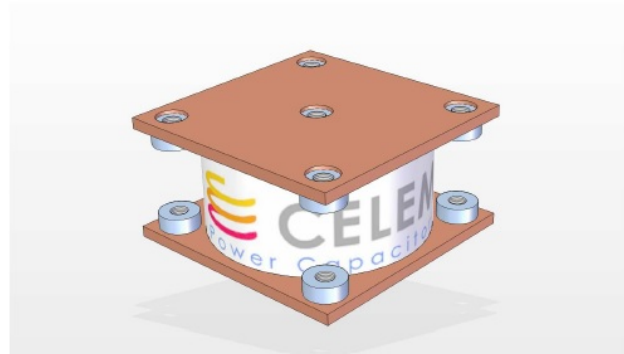
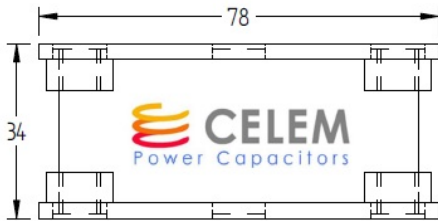
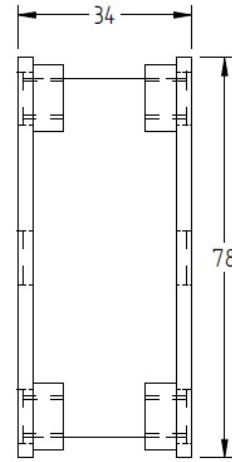
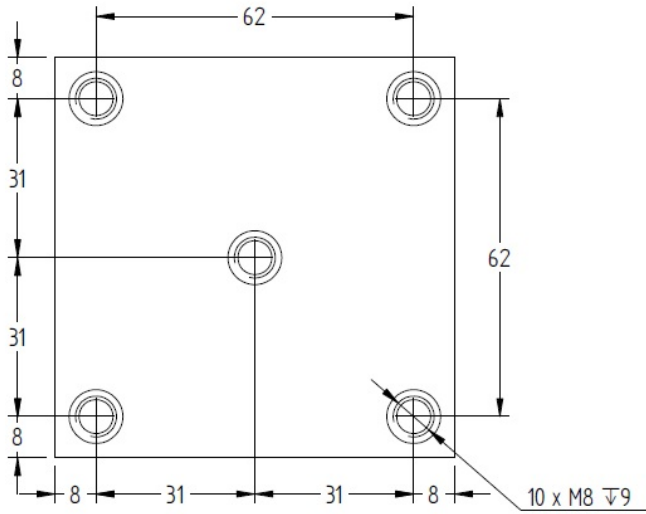


Sin 78x78

Conduction-cooled capacitor

Technology Patented Worldwide



Specifications

Type		Sin 78x78						
Dimensions (L x W x H)	mm	78 x 78 x 34						
Weight	kg	0.5						
Capacitance ($\pm 10\%$)	μF	0.4 μF	0.65 μF	1 μF	1.5 μF	2.25 μF	3.6 μF	7.7 μF
Sinusoidal Voltage	V _{rms}	1000		800	750	700	650	500
Peak_Voltage	V	1410	1270	1130		990	850	707
Max. Current	A _{rms}	550	700	800	900	1050	1250	
Max. Power	kVA _r	300			400			
Freq Range @ Half Power	kHz	59-802	45-800	49-509	33-429	28-390	24-345	16-161

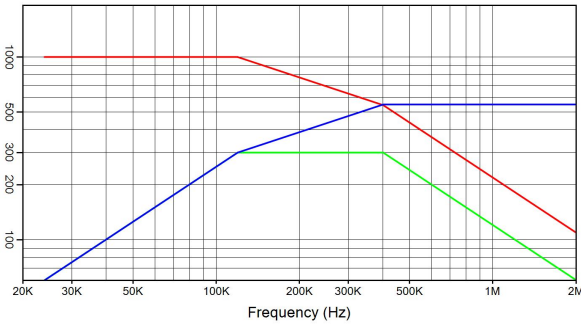
Celem Power Capacitors

Produced: 27/09/2016

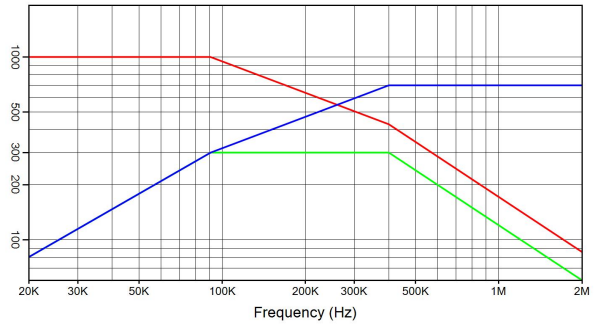
Sin 78x78

Conduction-cooled capacitor

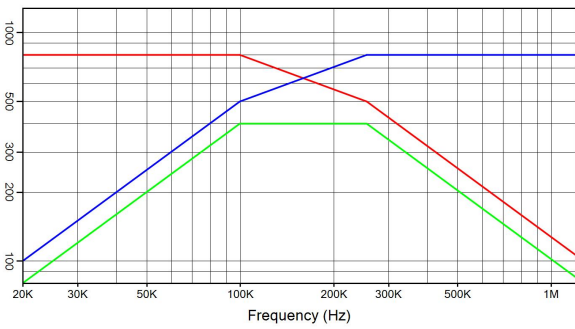
Technology Patented Worldwide



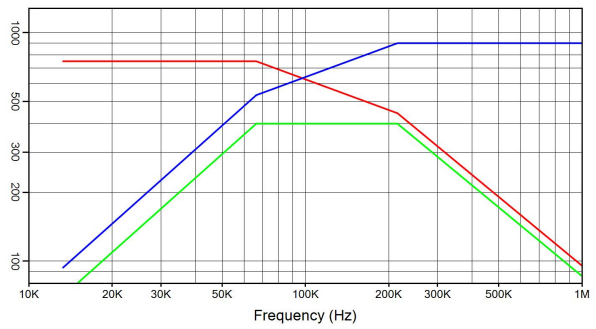
Sin 78x78 0.4 µF 1000 V_{rms} 550 A_{rms} 300 kVA_r
 I(A) — Q(kVA_r) — V_{rms} —



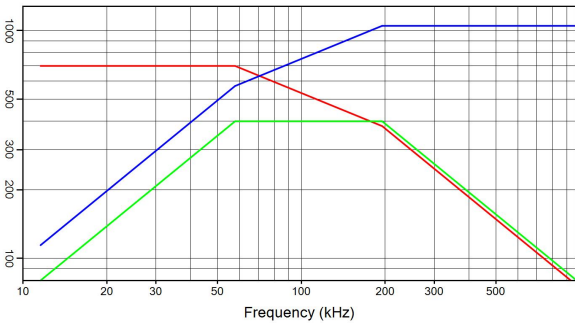
Sin 78x78 0.65 µF 1000 V_{rms} 700 A_{rms} 300 kVA_r
 I(A) — Q(kVA_r) — V_{rms} —



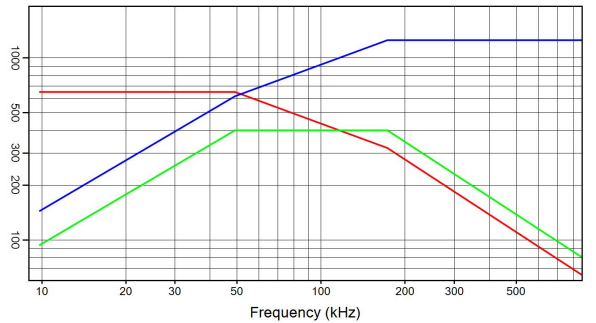
Sin 78x78 1 µF 800 V_{rms} 800 A_{rms} 400 kVA_r
 I(A) — Q(kVA_r) — V_{rms} —



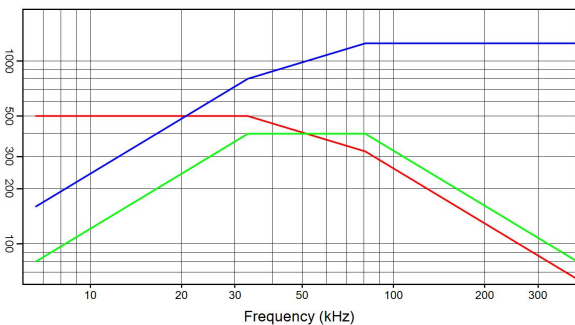
Sin 78x78 1.5 µF 750 V_{rms} 900 A_{rms} 400 kVA_r
 I(A) — Q(kVA_r) — V_{rms} —



Sin 78x78 2.25 µF 700 V_{rms} 1050 A_{rms} 400 kVA_r
 I(A) — Q(kVA_r) — V_{rms} —



Sin 78x78 3.6 µF 650 V_{rms} 1250 A_{rms} 400 kVA_r
 I(A) — Q(kVA_r) — V_{rms} —



Sin 78x78 7.7 µF 500 V_{rms} 1250 A_{rms} 400 kVA_r
 I(A) — Q(kVA_r) — V_{rms} —

Celem Power Capacitors

Produced: 27/09/2016