

### GENERAL TECHNICAL CHARACTERISTICS

Reference standards : IEC 61071  
 Dielectric : Polypropylene film  
 Construction : Dry construction, Non-inductive type.  
 Coating : Polyester tape wrapping, UL94 V-0 material filling

### ELECTRICAL CHARACTERISTICS

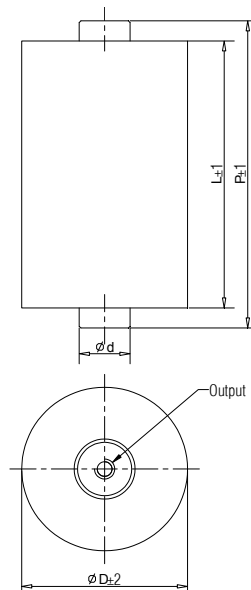
Operating temperature range: - 40 to + 85 °C (case)  
 Capacitance : 15 to 500µF  
 Rated Voltage : 500 to 1100 VDC  
 Tolerance : ± 5% , ± 10%  
 Dissipation factor:  $\leq 2 \times 10^{-3}$  Measured at 100Hz and 20±5°C  
 Life expectancy : 100,000 hours at Un and 70 °C (Hotspot temperature).

### TEST METHODS AND PERFORMANCES

Dielectric strength: 1.5Un (DC) applied to 10s at 20±5°C  
 Test voltage terminal to case : 3KVAC/50Hz for 60s  
 Insulation resistance : ≥ 5000 s after 1 minute of electrification at 100VDC (20±5°C )

### ORDERING CODE

Please refer to order code



M6*8	M8*8
d= 15mm	d= 18mm
4.5N.M.Max	8.5N.M.Max

### Electrical specifications, ordering codes

Ordering Code	Cap (µF)	Diameter (mm)	Length (mm)	P (mm)	Output	Du/dt (v/µs)	I <sub>rms</sub> @60°C @10KHz (A)	ESR@1.0KHz (m Ω)
<b>Un 500VDC , Us 750V , Ur 150V</b>								
SHA-500-50-40F6	50	50	40	52	M6*8	32	30	1.4
SHA-500-80-50F6	80	52	50	62	M6*8	22	31	1.6
SHA-500-100-50F6	100	58	50	62	M6*8	22	36	1.4
SHA-500-150-64F6	150	58	64	77	M6*8	15	37	1.4
SHA-500-250-64F8	250	74	64	77	M8*8	15	53	1.2
SHA-500-300-114F6	300	56	114	127	M6*8	7	37	2.7
SHA-500-500-114F8	500	72	114	127	M8*8	7	54	1.8
<b>Un 700VDC , Us 1050V , Ur 200V</b>								
SHA-700-35-40F6	35	53	40	52	M6*8	47	30	1.6
SHA-700-50-50F6	50	52	50	62	M6*8	32	29	1.9
SHA-700-80-50F6	80	65	50	62	M6*8	32	40	1.4
SHA-700-100-64F6	100	60	64	77	M6*8	21	36	1.9
SHA-700-150-64F8	150	72	64	77	M8*8	21	48	1.4
SHA-700-200-114F6	200	58	114	127	M6*8	10	35	3.1
SHA-700-300-114F8	300	71	114	127	M8*8	10	48	2.2
<b>Un 900VDC , Us 1350V , Ur 250V</b>								
SHA-900-20-40F6	20	50	40	52	M6*8	66	25	2.0
SHA-900-30-50F6	30	50	50	62	M6*8	44	25	2.4
SHA-900-40-50F6	40	58	50	62	M6*8	44	31	1.9
SHA-900-50-64F6	50	53	64	77	M6*8	29	27	2.7
SHA-900-100-64F8	100	74	64	77	M8*8	29	45	1.6
SHA-900-150-114F6	150	63	114	127	M6*8	14	36	3.3
SHA-900-200-114F8	200	72	114	127	M8*8	14	45	2.6
<b>Un 1100VDC , Us 1650V , Ur 300V</b>								
SHA-1100-15-40F6	15	51	40	52	M6*8	83	24	2.2
SHA-1100-25-50F6	25	53	50	62	M6*8	56	26	2.4
SHA-1100-40-50F6	40	67	50	62	M6*8	56	37	1.7
SHA-1100-50-64F6	50	61	64	77	M6*8	37	32	2.4

**Electrical specifications, ordering codes**

Ordering Code	Cap ( $\mu$ F)	Diameter (mm)	Length (mm)	P (mm)	Output	Du/dt (v/ $\mu$ s)	I <sub>rms</sub> @25°C @10KHz (A)	ESR@1.0KHz (m $\Omega$ )
<b>Un 1100VDC , Us 1650V , Ur 300V</b>								
SHA-1100-80-64F8	80	77	64	77	M8*8	37	46	1.7
SHA-1100-100-114F6	100	60	114	127	M6*8	18	31	4.1
SHA-1100-150-114F8	150	73	114	127	M8*8	18	43	2.9